

## Experimental Investigation and Optimization of Process Parameters in Abrasive Water Jet Drilling on AL6061

*S. Prabhakaran, D.S. Balaji, and T. Mayilsamy*

Department of Mechanical Engineering,  
Anand Institute of Higher Technology,  
Chennai, Tamilnadu, India

Copyright © 2016 ISSR Journals. This is an open access article distributed under the **Creative Commons Attribution License**, which permits unrestricted use, distribution, and reproduction in any medium, provided the original work is properly cited.

**ABSTRACT:** Abrasive Water jet (AWJ) Machining is a recent non-traditional machining process. Major part of this technology is a very high-pressure beam of water and abrasives, which is used for machining. Abrasive water jet drilling of material involves the effect of a high velocity jet of water with entrained abrasive particles on to material to be drilled. This technology is widely used in industry for drilling, difficult to machine materials, milling slots, polishing hard materials, cleaning contaminated surfaces, etc. In the proposed work , the process parameters on surface roughness (Ra) which is an important drilling performance is measured in abrasive water jet drilling of AL6061 . Experiments will be conducted in varying, nozzle traverse speed, abrasive mass flow rate and standoff distance for drilling AL6061 alloy using abrasive water jet drilling process. The effects of these parameters on surface roughness will be studied based on the experimental results and useful recommendations will be given in order to select the suitable process parameters in abrasive water jet drilling of AL6061 alloy.

**KEYWORDS:** Abrasive water jet, Surface Roughness, drilling, nozzle.

### 1 INTRODUCTION

Abrasive Water jet (AWJ) Machining is a recent non-traditional machining process. Major part of this technology is a very high-pressure beam of water and abrasives, which is used for machining. Abrasive water jet cutting of material involves the effect of a high velocity jet of water with entrained abrasive particles on to material to be cut. This technology is widely used in industry for cutting difficult to machine materials, milling slots, polishing hard materials, cleaning contaminated surfaces, etc. AL6061 aluminium alloys have found application in automotive structures, as they offer an attractive combination of strength, formability and corrosion resistance, surface properties and good weld ability.

In the proposed work, the process parameters on surface roughness (Ra) which is an important cutting performance is measured in abrasive water jet cutting of AL6061 . Experiments will be conducted in varying water pressure , nozzle traverse speed, abrasive mass flow rate for cutting AL6061 alloy using abrasive water jet cutting process. The effects of these parameters on surface roughness will be studied based on the experimental results and useful recommendations will be given in order to select the suitable process parameters in abrasive water jet drilling of AL6061 alloy. Abrasive water jet machine is shown in fig.1.



Fig. 1. Abrasive Water Jet (AWJ) Machine

## 2 METHDOLOGY

### 2.1 MATERIAL SELECTION

T6 temper 6061 has an ultimate tensile strength of at least 42,000 psi (300 MPa) and yield strength of at least 35,000 psi (241 MPa). More typical values are 45,000 psi (310 MPa) and 40,000 psi (275 MPa), respectively. In thicknesses of 0.250 inch (6.35 mm) or less, it has elongation of 8% or more; in thicker sections, it has elongation of 10%.

### 2.2 DESIGNS OF EXPERIMENTS

The experimental layout for the machining parameters using the L9 orthogonal array was used in this study. This array consists of three control parameters and three levels, as shown in table1. In the Taguchi method, most all of the observed values are calculated based on „the smaller the better“. Thus in this study, the observed values of SR is set to be at minimum condition. Experimental trial was performed with three simple replications at each set value. The optimisation of the observed values was determined by comparing the standard analysis and analysis of variance (ANOVA) which was based on the Taguchi method.

For each experiment, the machining parameters were set to the pre-defined levels according to the orthogonal array. All machining procedures were done using a single pass cutting. The supply pressure, transverse speed and standoff distance is controlled through the controller in the operator control stand. The surface finish parameter employed to indicate the surface quality in this experiment was the arithmetic mean roughness (Ra). Work piece surface roughness Ra was measured by a surface roughness equipment model “TAYLOR HOBSON”. Surface roughness was measured at the centre of the cut for each specimen.

## 3 INPUT PARAMETERS

### 3.1 LEVEL OF INPUT PARAMETERS

The experiments were carried out in full factorial method. The level of input parameter is given in Table 1. Each experiment were replicated three times in order to identify the variability associated with the experiment.

Table 1. Levels of Input Parameters

| Factors                    | Level 1 | Level 2 | Level 3 |
|----------------------------|---------|---------|---------|
| Abrasive flow rate(gm/min) | 100     | 200     | 300     |
| Feed rate(mm/rev)          | 90      | 100     | 110     |
| Stand of distance(mm)      | 2       | 3       | 4       |

### 3.2 ABRASIVE FLOW RATE

In abrasive flow machining, the abrasive fluid flows through the work piece, effectively performing erosion. Abrasive particles in the fluid contact raised features on the surface of the work piece and remove them. The fluid is forced through the work piece by a hydraulic ram, where it acts as a flexible file, or slug, molding itself precisely to the shape of the work piece. The highest amount of material removal occurs in areas where the flow of the fluid is restricted; according to Bernoulli's Principle, the flow speed and pressure of the fluid increase in these areas, facilitating a higher material removal rate

### 3.3 FEED RATE(F)

The rate at which the tool moves along the cutting path is known as feed rate. Feed rate is measured in mm/revolution. The formula for finding the feed rate is given below.

$$f = F n \text{ mm/min}$$

Where, f is the feed in mm/min, F is the feed in mm/rev and n is the rotations per minute (rpm).

### 3.4 STAND OF DISTANCE(MM)

Standoff distance is a security measure that focuses on preventing unscreened people and vehicles from approaching within a certain distance of a building, car, other shelter where a violent criminal is sheltered, hostages are under armed threat from kidnapers, where a bomb is believed to have been placed, or where other unspecified dangers may be lurking. It is a measure of distance informally used by agents handling the situation to protect their own persons from physical injury or death while the situation is resolved.

## 4 OUTPUT PARAMETERS

### 4.1 CIRCULARITY

A circularity ratio as a compactness measure of a shape. An assumption of ANOVAs with repeated-measures. It denotes the homogeneity of the variances of difference values between the conditions. It is often also called "sphericity"



Fig. 2. Video measuring system for circularity

4.2 SURFACE ROUGHNESS

Surface roughness is a measure of the technological quality of a product and a factor that greatly influences manufacturing cost. It describes the geometry and surface textures of the machined parts. There are several ways to describe surface roughness, such as roughness average ( $R_a$ ), root-mean-square (rms) roughness ( $R_q$ ) and maximum peak-to-valley roughness ( $R_y$  or  $R_{max}$ ), etc.



Fig. 3. Computer controlled surface roughness measurement

5 CONTROLABLE PARAMETERS

The possible controllable parameters of AWJM are water jet orifice size, water jet pressure, abrasive grit size, abrasive material, abrasive flow rate, traverse rate, standoff distance, angle of attack, composition of work piece. The table2 clearly shows the controllable parameters.

Table 2. Controllable parameters

| Parameters                 | Level 1 | Level 2 | Level 3 |
|----------------------------|---------|---------|---------|
| Stand of distance(mm)      | 2       | 3       | 4       |
| Traverse rate(mm/min)      | 90      | 100     | 110     |
| Abrasive flow rate(gm/min) | 100     | 200     | 300     |

5.1 RESPONSE FOR INPUT PARAMETERS

From table 3, it can be seen that the highest value is obtained in the 7th row, which is related to optimal process parameters. The optimal parameters are abrasive flow rate 300g/min, feed rate110 mm/min, an standoff distance 2mm. At these parameters we observe optimum outputs as Surface Roughness 3.9  $\mu\text{m}$  and Circularity 10.101 mm. Figure 4 and 5 clearly shows the test conducted for surface roughness for different input parameters.

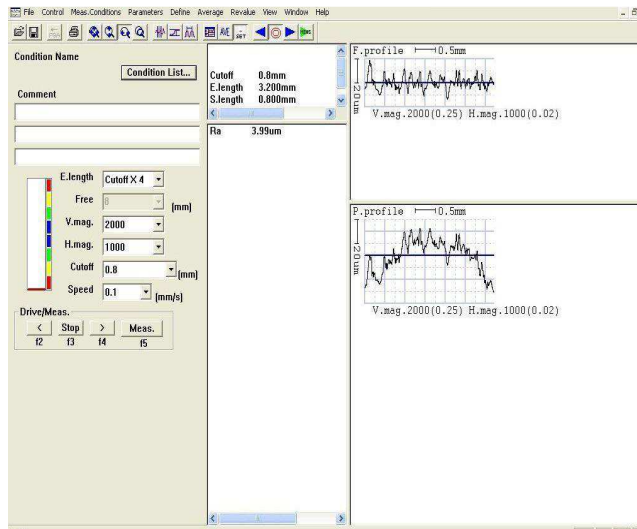


Fig. 4. Test conducted for Surface Roughness(Ra)

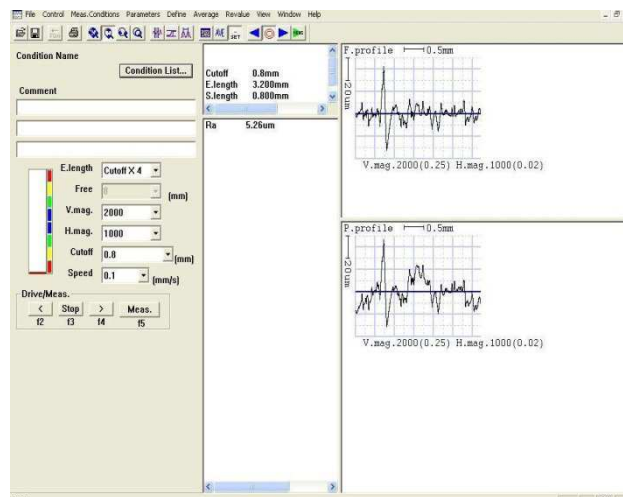


Fig. 5. Test conducted for Surface Roughness(Ra)

Table 3. Response for input parameters

| S.No | Stand Of Distance(mm) | Traverse Rate(mm/Min) | Abrasive Flow Rate(Gm/Min) | Surface Roughness - Ra ( $\mu\text{m}$ ) | Circularity (Mm) |
|------|-----------------------|-----------------------|----------------------------|--|------------------|
| 1    | 2                     | 90                    | 100                        | 6.03                                     | 10.033           |
| 2    | 2                     | 90                    | 100                        | 4.49                                     | 10.028           |
| 3    | 2                     | 90                    | 100                        | 6.34                                     | 10.101           |
| 4    | 2                     | 100                   | 200                        | 5.26                                     | 10.064           |
| 5    | 2                     | 100                   | 200                        | 5.69                                     | 10.084           |
| 6    | 2                     | 100                   | 200                        | 5.39                                     | 10.005           |
| 7    | 2                     | 110                   | 300                        | 3.99                                     | 10.101           |
| 8    | 2                     | 110                   | 300                        | 3.23                                     | 10.107           |
| 9    | 2                     | 110                   | 300                        | 5.28                                     | 10.019           |
| 10   | 3                     | 90                    | 200                        | 2.87                                     | 10.119           |
| 11   | 3                     | 90                    | 200                        | 6.18                                     | 10.004           |
| 12   | 3                     | 90                    | 200                        | 5.86                                     | 10.039           |
| 13   | 3                     | 100                   | 300                        | 4.36                                     | 10.074           |
| 14   | 3                     | 100                   | 300                        | 7.13                                     | 10.078           |
| 15   | 3                     | 100                   | 300                        | 4.3                                      | 10.139           |
| 16   | 3                     | 110                   | 100                        | 5.75                                     | 10.14            |
| 17   | 3                     | 110                   | 100                        | 6.6                                      | 10.09            |
| 18   | 3                     | 110                   | 100                        | 5.24                                     | 10.005           |
| 19   | 4                     | 90                    | 300                        | 6.33                                     | 10               |
| 20   | 4                     | 90                    | 300                        | 5.29                                     | 10.184           |
| 21   | 4                     | 90                    | 300                        | 5.38                                     | 10.229           |
| 22   | 4                     | 100                   | 100                        | 5.02                                     | 10.09            |
| 23   | 4                     | 100                   | 100                        | 4.24                                     | 10.193           |
| 24   | 4                     | 100                   | 100                        | 5.01                                     | 10.167           |
| 25   | 4                     | 110                   | 200                        | 6.69                                     | 10.21            |
| 26   | 4                     | 110                   | 200                        | 5.41                                     | 10.074           |
| 27   | 4                     | 110                   | 200                        | 4.68                                     | 10.193           |

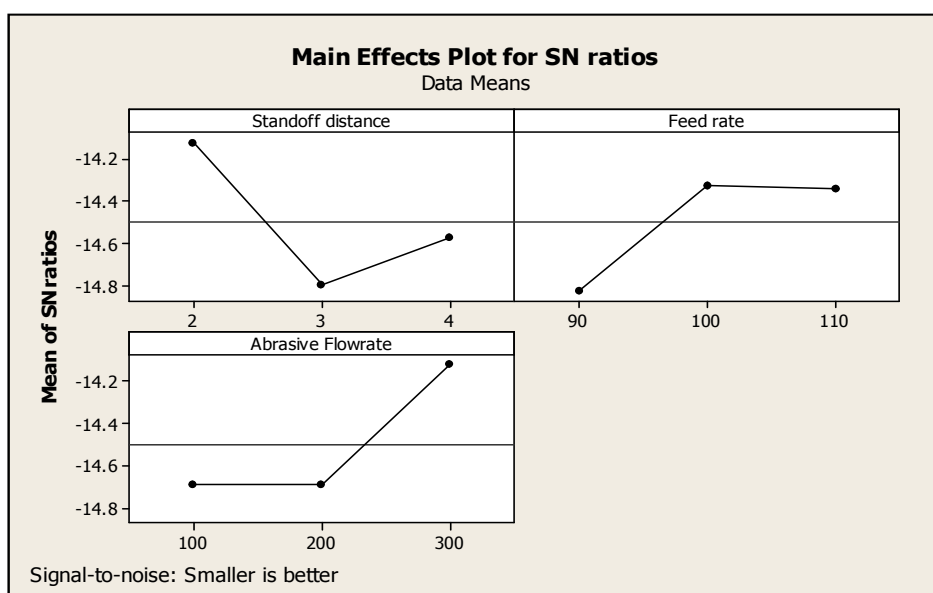
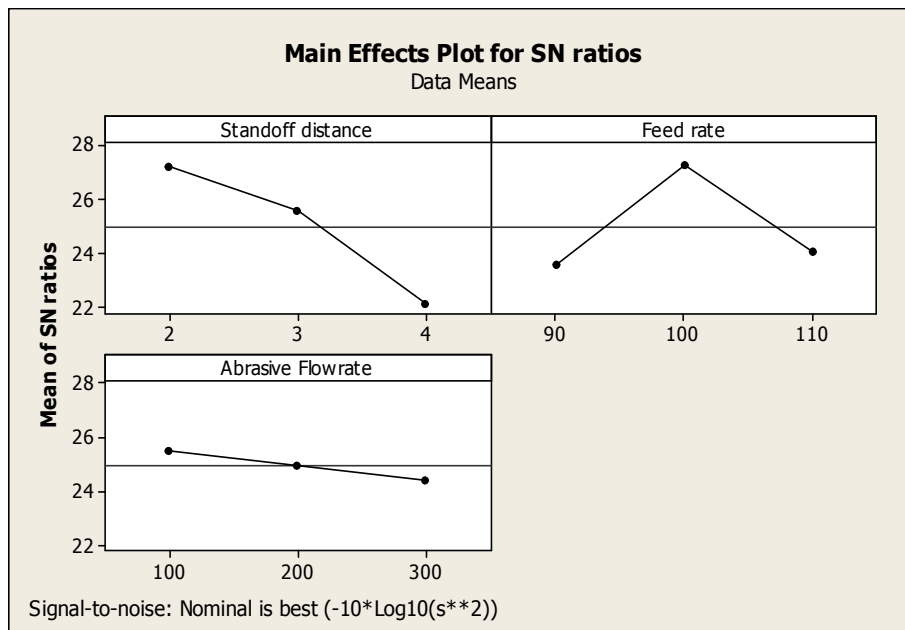


Fig. 6. Main effects plot for SN ratio

Figure 6 clearly shows the main effects plot for SN ratio for input parameters of 2mm standoff distance feedrate and abrasive flow rate of 110mm/min and 300 g/min respectively. Among 27 different parameters are tested, from that the optimal parameter is obtained are shown in table 4.

**Table 4. Optimal parameters for surface roughness and Circularity**

| Sl no | Optimal Input parameters   | Corresponding output parameters                          |
|-------|--|--|
| 1     | Standoff distance: 2mm<br>Feed rate: 110mm/min<br>Abrasive flow rate: 300g/min | Surface roughness: 3.99 $\mu$ m<br>Circularity: 10.101mm |



**Fig. 7. Main effects plot for SN ratio**

Figure 7 clearly shows the main effects plot for SN ratio for input parameters of 2mm standoff distance feedrate and abrasive flow rate of 100mm/min and 200 g/min respectively. Among 27 different parameters are tested, from that the optimal parameter is obtained are shown in table 5.

**Table 5. Optimal parameters for surface roughness and Circularity**

| Sl no | Optimal Input parameters   | Corresponding output parameters                          |
|-------|--|--|
| 1     | Standoff distance: 2mm<br>Feed rate: 100mm/min<br>Abrasive flow rate: 200g/min | Surface roughness: 5.26 $\mu$ m<br>Circularity: 10.064mm |

## 6 CONCLUSION

The optimal parameter values with respect to surface roughness are abrasive flow rate at 200gm/min, Feed rate at 110mm/min and standoff distance at 2mm. At these parameters the values of Surface roughness and circularity are 3.99 $\mu$ m and 10.101mm respectively. The optimal parameter values with respect to circularity are abrasive flow rate at 200gm/min, Feed rate at 100mm/min and standoff distance at 2mm. At these parameters the values of Surface roughness and circularity are 5.26 $\mu$ m and 10.064mm respectively.

**REFERENCES**

- [1] M.Sreenivasa Rao, S.Ravinder and A. Seshu Kumar Ć “Parametric Optimization of Abrasive Water jet Machining for Mild Steel: Taguchi Approach” *International Journal of Current Engineering and Technology* (2014) E-ISSN 2277 – 4106, P-ISSN 2347 – 5161
- [2] B. Satyanarayana, G. Srikar “optimization of abrasive water jet machining process Parameters using taguchi grey relational analysis(TGRA)” *Proceedings of 13th IRF International Conference, 20th July-2014, Pune, India, ISBN: 978-93-84209-37-7*
- [3] Alberdi & A. Rivero & L. N. López de Lacalle & I. Etxeberria & A. Suárez “Effect of process parameter on the kerf geometry in abrasive water jet milling” *Int J Adv Manuf Technol* (2010) 51:467–480
- [4] Ulas, C, aydas, Ahmet Hasc,alık “A study on surface roughness in abrasive water jet machining process using artificial neural networks and regression analysis method” *journal of materials processing technology* 202 ( 2008 ) 574–582
- [5] J. John Rozario Jegaraj, N. Ramesh Babu “A strategy for efficient and quality drilling of materials with abrasive water jets considering the variation in orifice and focusing nozzle diameter” *International Journal of Machine Tools & Manufacture* 45 (2005) 1443–1450
- [6] Adnan Akkurt a, Mustafa Kemal Kulekci b,Ulvi Seker c, Fevzi Ercan d “Effect of feed rate on surface roughness in abrasive water jet drilling applications” *Journal of Materials Processing Technology* 147 (2004) 389–396.
- [7] M. Hashish, “A modeling study of metal cutting with abrasive water jets”, *ASME J. Eng. Mater. Tech.* 106 (1984) pp 88–100. Hashish, “An investigation of milling with abrasivewaterjets”, *ASME J. Eng. Ind.* 111 (1989) 158–166.
- [8] J. John Rozario Jegaraj, N. Ramesh Babu, “A soft computing approach for controlling the quality of cut with abrasive waterjet cutting system experiencing orifice and focusing tube wear”, *Journal of Materials Processing Technology* 185 (2007) pp 217–227.
- [9] S. Naveen & Aslam A. Hirani, “Design & Fabrication of Abrasive Jet Machining”, *International Journal of Mechanical and Production Engineering Research and Development (IJMPERD)* ISSN(P): 2249-6890; ISSN(E):2249-8001 (2014) pp.55-62
- [10] Koenig W., Wulf Ch., Grass P. and Willerscheid H. “Machining of fibre reinforced plastics”, *Annals of CIRP*, Vol. 34, No. 2, 1985.
- [11] Wei-Chung Weng, Fan Yang, Atef Z. Elsherbeni, “Linear Antenna Array Synthesis Using Taguchi’s Method: A Novel Optimization Technique in Electromagnetics”, *Ieee Transactions On Antennas And Propagation*, (2007) pp 723-730.
- [12] Singh P.J., Chen W. L., Munoz J. “Comprehensive evaluation of abrasive water jet cut surface quality”, in *Proceedings of the 6th American Water Jet Conference, Houston, USA, 1991.*
- [13] Ramulu M., Arola D. “The influence of abrasive water jet cutting conditions on the surface quality of graphite/epoxy laminates”, *International Journal of Machine Tools & Manufacture*, Vol. 34, No. 3, 1994.
- [14] Siddiqui T.U., Shukla M., Tambe, P.B. “Optimization of surface finish in abrasive water jet cutting of Kevlar composites using hybrid Taguchi and response surface method”, *International Journal of Machining and Machinability of Materials*, Vol. 3, 2008.
- [15] Yu Zhong, “A Study of the Cutting Performance in Multipass Abrasive Waterjet Machining of Alumina Ceramics with Controlled Nozzle Oscillation”, *Master Thesis, School of Mechanical and Manufacturing Engineering, The University of New South Wales, 2008.*